

### Program Staff

The Inclusive Preschool classes are instructed by dually-certified teachers and all sections have at least one classroom assistant.

### School Nurse

A full-time school nurse is present daily to address emergencies, monitor medical conditions, and address student's individual health needs.

### General Information

Classes Meet :

2 ¼ hours per day, 5 days per week

3 yr. old students – 9:30am-11:45am

4 yr. old students – 12:50pm-3:05pm

The Inclusive Preschool program follows the Hanover Township Public Schools' regular school year calendar.

Enrolled students may attend for a maximum of 2 years (i.e., while 3 and 4 years old)

***Parents are responsible for transporting their children to/from the Inclusive Preschool program***

### Special Education

Children enrolled in the Inclusive Preschool program are not eligible for speech, occupational or physical therapy.

Students whose performance suggests they could be at-risk for future difficulties in school may be referred for review by the Child Study Team.

### For More Information

Please contact:

Gregory Margolis  
Director of Special Services  
Bee Meadow School  
120 Reynolds Avenue  
Whippany, NJ 07039  
973-515-2443 (Phone)

[www.hanovertwpschools.com](http://www.hanovertwpschools.com)

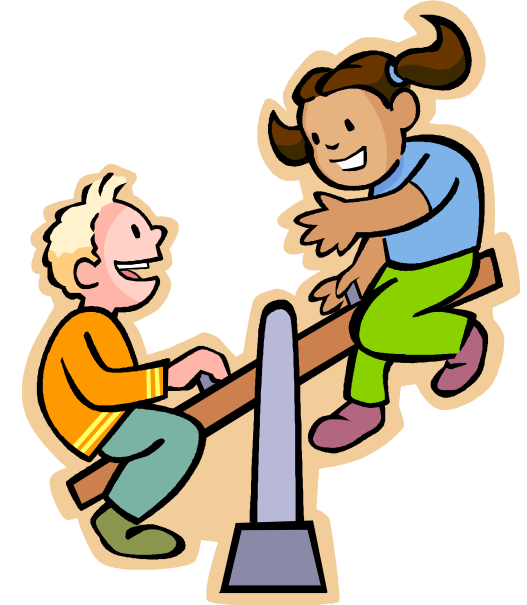
Go to the ***Inclusive Preschool*** link on the left menu bar on the district's home page.

---

*Hanover Township Public  
Schools*

## **Inclusive Preschool Program**

---



The Hanover Township Public Schools' Inclusive Preschool program, provides 3 and 4 year-old students with a comprehensive academic and language enriched preschool experience.

The program's primary focus is facilitating children's development of strong foundational skills necessary for successful transition to Kindergarten.

## Core Program Goals

Developing and enhancing children's age-appropriate communication, social, and academic readiness skills are the central goals of the program.

Students are exposed daily to a language-rich environment. Lessons and activities are developed to promote the use and generalization of these skills.



## Curriculum

The district's preschool program integrates elements of *The Creative Curriculum* for preschool, is aligned with the *New Jersey Preschool Teaching and Learning Standards*, and the district's Kindergarten curriculum in the following areas:

- Literacy
- Mathematics
- Science
- Social Studies
- The Arts
- Technology
- Social Skills

To promote skill mastery, classroom instruction is partnered with hands-on activities; music; free and structured play; use of an age-appropriate, outdoor playground; use of technology; and participation in school assemblies and specials.



## Program Eligibility

To be considered for the Inclusive Preschool program, children must be:

- Residents of Hanover Township
- Between the ages of 3 and 4 by October 1, 2019
  - Children who are eligible for Kindergarten or are 5 years old on October 1, 2019 **will not** be accepted.
- ***Fully Toileted Trained before the first day of class***

## Admission Process

- Acceptance in to the program will be through a randomly drawn lottery.
- Only complete applications will be considered for inclusion in the lottery.
- The lottery will be drawn on **February 28, 2019**. Accepted students will be notified within 1 week of the lottery drawing.